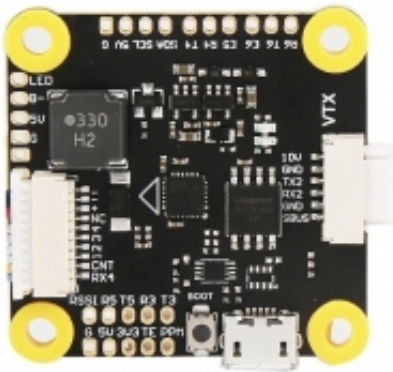


Link do produktu: <https://www.nobshop.pl/kontroler-lotu-fc-t-motor-f4-hd-premium-p-2959.html>



## Kontroler lotu FC T-Motor F4 HD Premium

Cena brutto	<b>199,99 zł</b>
Cena netto	<b>162,59 zł</b>
Dostępność	<b>Aktualnie niedostępny</b>
Czas wysyłki	<b>1 - 3 dni</b>
Producent	<b>T-Motor</b>

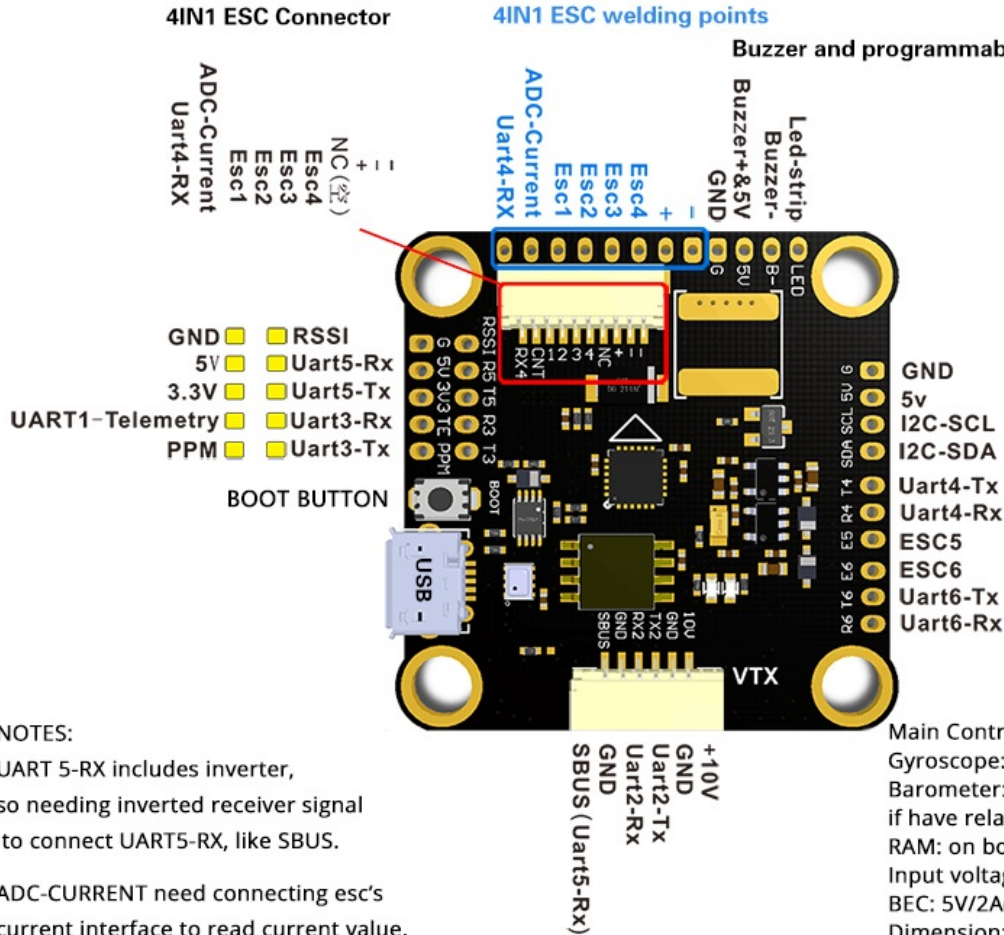
Opis produktu

## Kontroler Lotu T-Motor F4 Premium HD

### Specyfikacja:

- Napięcie zasilania: 2-8S (8.4-33.6V)
- MCU: STM32F405RGT6
- IMU: ICM20602
- UARTs: 6
- ESC Connections: 6
- BEC: 5V 2A
- LC Filter: Tak
- Rozmiar: 37x37x7mm
- Otwory montażowe: 30.5x30.5mm
- Waga: 7g

## TMOTOR F4(DJI Version) Interface Definition Figure

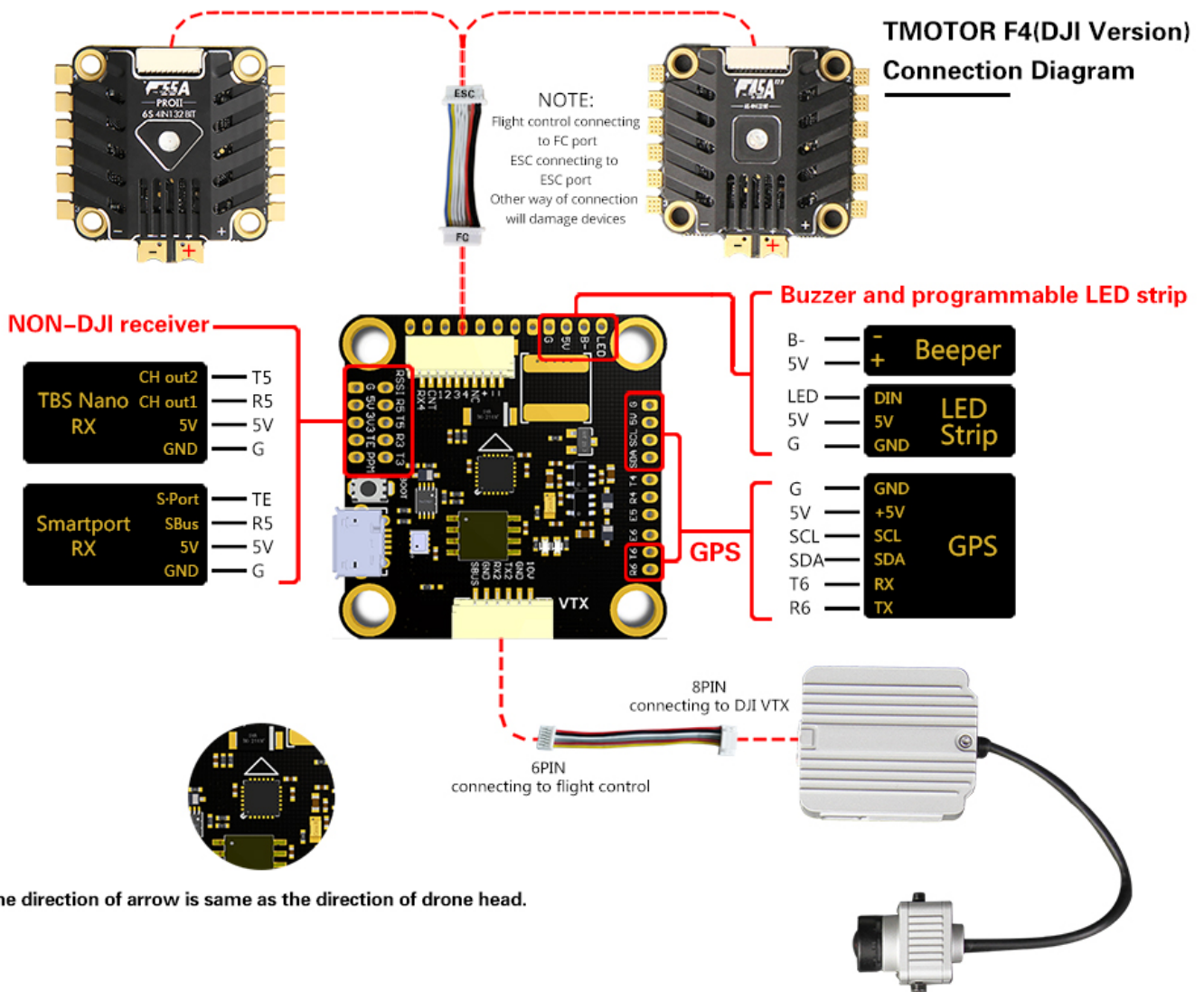


**NOTES:**

- UART 5-RX includes inverter, so needing inverted receiver signal to connect UART5-RX, like SBUS.
- ADC-CURRENT need connecting esc's current interface to read current value.
- Uart 4 - Rx need connecting esc's Telemetry to read telemetry data.
- 5V doesnt supply power for any other devices except receiver.

- Main Control Chip: STM32F405RGT6
- Gyroscope: MPU-6000
- Barometer: Optional(Pls contact supplier if have related need)
- RAM: on board 16Mb
- Input voltage: 12V-25.2V (3-6S)
- BEC: 5V/2A(Receiver), 10V/2A(VTX)
- Dimension:37MM\*37MM
- Mounting distance: 30.5mm\*30.5MM
- Weight:8.4g
- Firmware:TMOTORF4(BETAFLIGHT)

## TMOTOR F4(DJI Version) Connection Diagram



More information: [www.tmotor.com](http://www.tmotor.com)